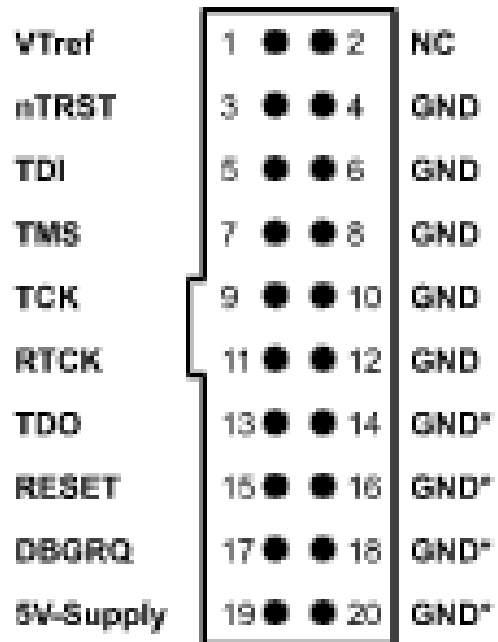


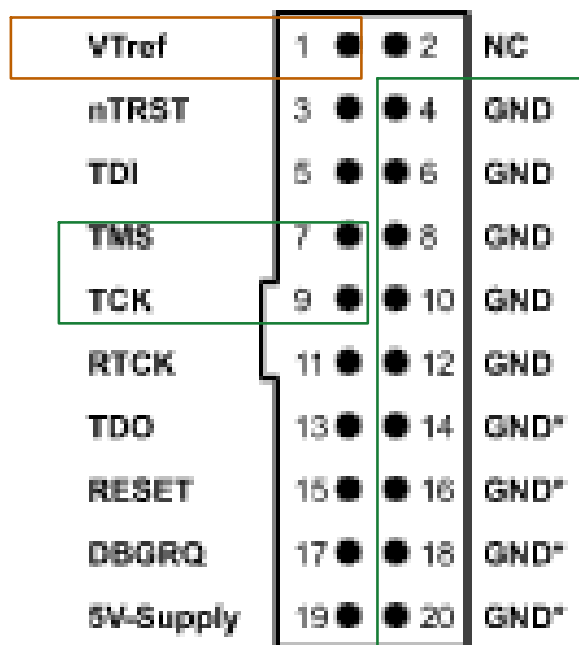
JLINK SWD接法

2022年3月24日 下午 03:11

A 20 pin JLINK connector:



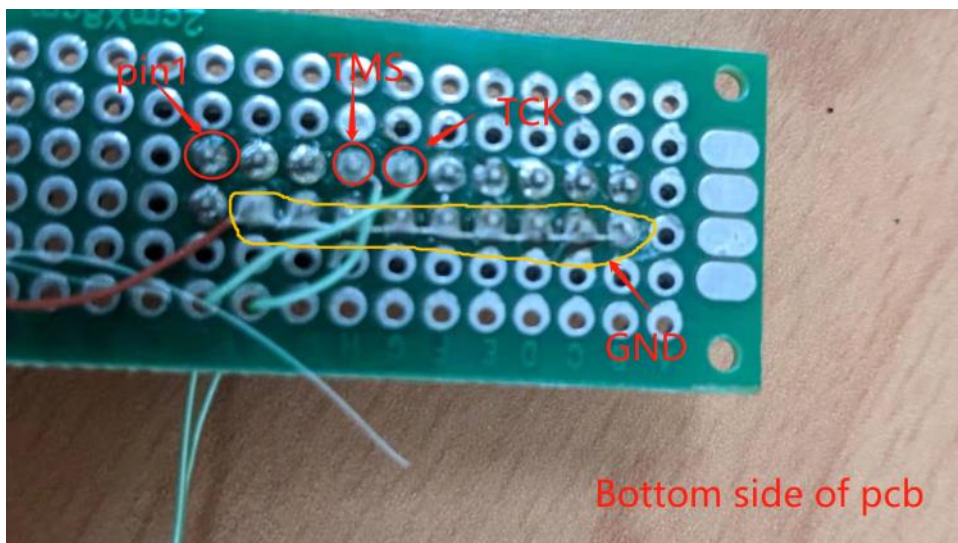
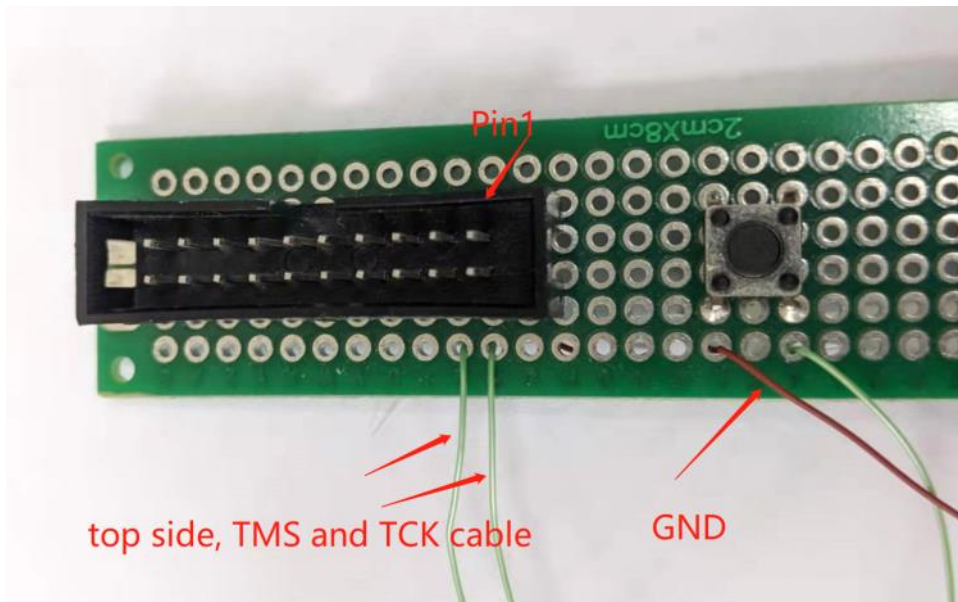
In SWD mode, we just need TMS, TCK and GND, others can leave them un-connected. (Note: some JLINK adapter do not have self-powered 3.3V, in this case we need to have 3.3V in pin 1)



5V-Supply | 19 | 20 | GND*

Method1:

We can make a board like this (please ignore the button in the picture, we didn't use it.) :



Where to buy 20 pin socket:

[JTAG插座 2.54直脚简易牛角座DC3-6-8-10-12-14-16-20-26-40-50P-淘宝网 \(taobao.com\)](https://www.taobao.com)

Hole board:

[PCB电路板单面喷锡绿油玻纤万能洞洞板万用板5X7 7X9 9X15 12X18-淘宝网 \(taobao.com\)](https://www.taobao.com)

Method2

If customer doesn't want to make a pcb, they can simply jumping three wires:







white:TMS
gray:TCK
black:GND